

Monitor® AW

INSTRUCTION MANUAL AT-THE-WELL PLUG-IN CONTROL KITS FOR SUBMERSIBLE PUMPS

GENERAL

This Manual applies to Control Kits with the following Ordering Numbers:

- (2-8) OAWSP
- (2-8) OAWS

Follow the instructions for installing the Monitor Pitless Unit to the point where the spool or Drop-Pipe Fitting Assembly is attached to the Drop-Pipe, then proceed with the following, (numbers in "()" refer to Figure 3):

1. Remove 3/8" Pipe Plug from Spool or Drop-Pipe Fitting.
2. Dope threads of female plug-in fitting (10) and screw into spool or drop-pipe fitting.
3. Pull pump cable up through spool or drop-pipe fitting assembly and then lower complete assembly into pitless case.
4. Bolt lift-out bar (3) to mounting block (6) and if a motor control box is installed at the well, bolt it to the lift-out bar. Note: If pressure switch is not supplied with control kit, it should be installed before attaching lift-out bar.

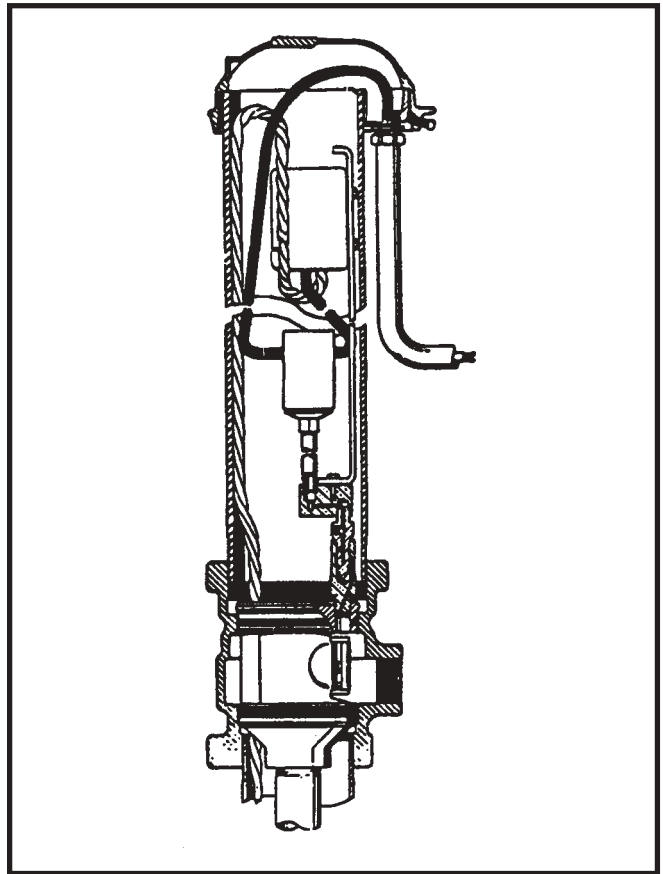


FIGURE 1 MONITOR PS UNIT CUTAWAY TO SHOW OAWSP CONTROL KIT INSTALLED IN OPERATING POSITION.

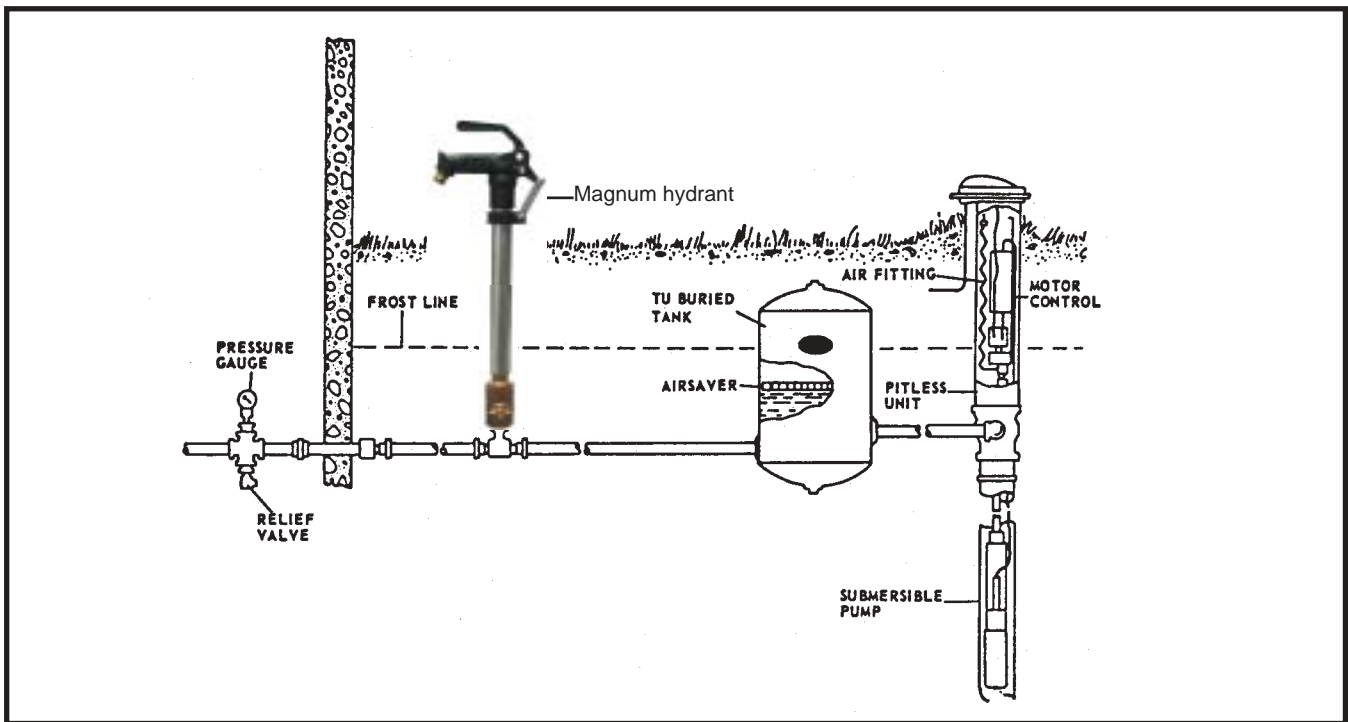


FIGURE 2 TYPICAL AT-THE-WELL SUBMERSIBLE PUMP INSTALLATION SHOWING OAWSP CONTROL KIT, 8AWC AIR FITTING AND TU AIR SAVER UNDERGROUND TANK.



AW Controls

5. Cut off the pump cable, 3 ft. above the top of the pitless case.
6. Connect pump cable to control box and/or make connection between control box and pressure switch. Run power line through conduit opening in pitless cap and attach to pressure switch.
7. Lubricate "O" rings (8) with Vaseline.
8. Lower complete control assembly into the pitless unit until the plug-in connection is engaged.
9. Start the submersible pump according to pump manufacturer's instructions.
10. Check pressure switch setting and complete installation by securing pitless unit cap.

TROUBLE-SHOOTING

Cycling of Pressure Switch may be caused by:

- A. Water-logged System.
Remedy: Replace mechanical air volume control with Float and/or drain or pressure-charge tank.
- B. Inadequate differential setting of pressure switch.
Remedy: Increase setting until cycling stops.
- C. Too small a discharge line.
Remedy: Replace line or install Monitor Buried Tank adjacent to pitless unit.

NOTE: If tank is installed beyond 15' of control, use at your own risk.

NOTE: Pressure relief valve is recommended on all installations - 120 PSI maximum.

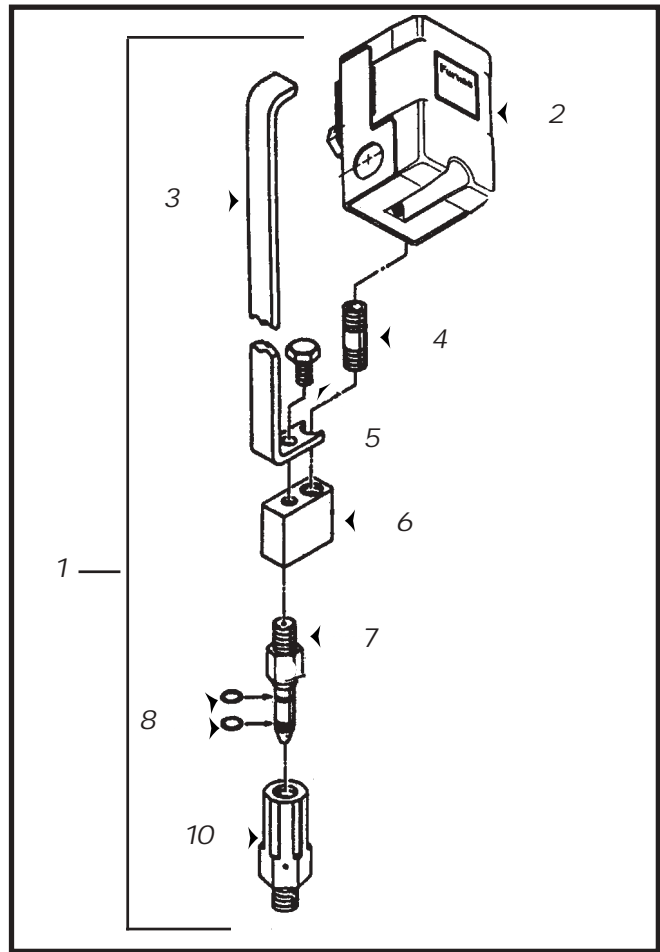


FIGURE 3 EXPLODED VIEW OF 0AWSP CONTROL KIT

Model No.			0AWSP
Item	Qty	Description	Ord. No.
1	1	Plug-in Control Kit with pressure switch PS Units	0AWSP
1	1	Same as above, w/o pressure switch	0AWS
2	1	Pressure switch set 30-50 PSI.	334PC
3	1	Lift-out Bar - 2'	2PS
		Lift-out Bar - 3'	3PS
		Lift-out Bar - 4'	4PS
		Lift-out Bar - 5'	5PS
		Lift-out Bar - 6'	6PS
		Lift-out Bar - 7'	7PS
		Lift-out Bar - 8'	8PS
4	1	Galv. Pipe Nipple 1/4"-1-1/2"	PC332
5	1	Hex Head Cap Screw 5/16"-18NC x 1/2"	PS29
6	1	Mounting block	PS282
7	1	Male Plug-in Fitting	PR1A
8	2	"O" Rings	PS27
10	1	Female plug-in fitting	PS44